

HeritagePlastics

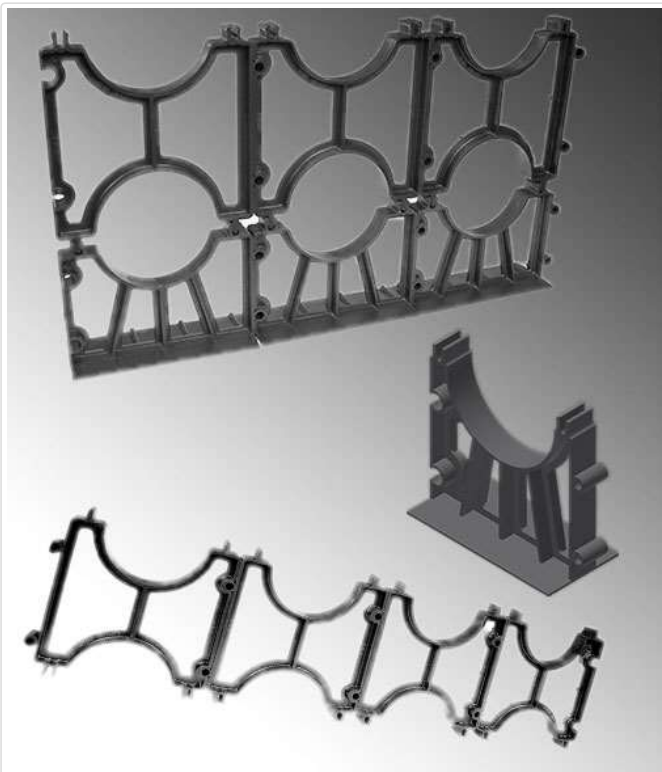


[Atkore \(http://atkore.com\)](http://atkore.com) [News \(http://www.heritageplastics.com/news/\)](http://www.heritageplastics.com/news/) [Rep Locator \(http://www.heritageplastics.com/rep-locator/\)](http://www.heritageplastics.com/rep-locator/) [Contact \(http://www.heritageplastics.com/contact/\)](http://www.heritageplastics.com/contact/)



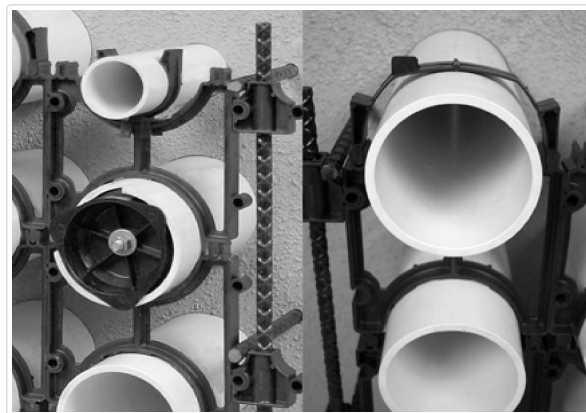
DUCT SPACERS

[Home \(http://www.heritageplastics.com/\)](http://www.heritageplastics.com/) / [Products \(http://www.heritageplastics.com/products/\)](http://www.heritageplastics.com/products/) / [PVC Electrical Conduit \(http://www.heritageplastics.com/pvc-electrical-conduit/\)](http://www.heritageplastics.com/pvc-electrical-conduit/) / Duct Spacers



Plastic duct spacers for completely enclosed and locked-in duct banks.

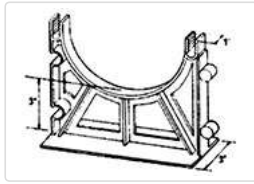
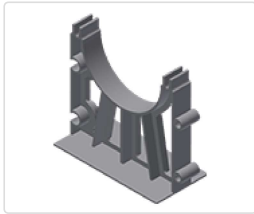
- They snap together, vertically, slide together horizontally for fast, secure field assembly.
- Only two components, base and intermediate, are needed. Banding is not necessary.
- With the Vertical-lok spacer, ducts are accurately separated. Spacers lock firmly together, preventing separation.
- Alignment of the duct bank sections is relatively easy with this completely locked-in construction.
- To prevent the top tier from floating during encased burial, it is suggested that an intermediate spacer be used as a cap.
- Used in both EB and DB installations.
- Vertical and horizontal interlocking permits building a strong, lock-in duct bank. A wide baseplate provides solid support for heaviest loads.
- Units slide together for horizontal locking.



Intermediate Spacers

TRADE SIZE	SYSTEM PART NUMBER	STANDARD PACKAGE QTY
2 x 1-1/2	1501	350
2 x 2	1521	300
2 x 3	1541	200

TRADE SIZE	SYSTEM PART NUMBER	STANDARD PACKAGE QTY
3 x 1-1/2	1561	225
3 x 2	1581	200
3 x 3	1601	125
4 x 1	1201	200
4 x 1-1/2	1851	150
4 x 2	1241	125
4 x 3	1891	90
5 x 1-1/2	1281	100
5 x 2	1301	100
5 x 3	1911	80
6 x 1-1/2	1321	100
6 x 2	1341	90
6 x 3	1621	70
8 x 2	1981	60



Base Spacers

TRADE SIZE	SYSTEM PART NUMBER	STANDARD PACKAGE QTY
2 x 1-1/2	1511	250
2 x 2	1531	225
2 x 3	1551	225
3 x 1-1/2	1571	175
3 x 2	1591	155
3 x 3	1611	150
4 x 1	1211	175
4 x 1-1/2	1861	140
4 x 2	1251	140
4 x 3	1901	120
5 x 1-1/2	1291	120
5 x 2	1311	120
5 x 3	1921	100
6 x 1-1/2	1331	100
6 x 2	1351	100
6 x 3	1631	95
8 x 2	1991	50

PVC Electrical Conduit ▶ (<http://www.heritageplastics.com/pvc-electrical-conduit/>)

PVC Plumbing Pipe ▶ (<http://www.heritageplastics.com/pvc-plumbing-pipe/>)

Rep Locator (<http://www.heritageplastics.com/rep-locator/>)

Contact Us (<http://www.heritageplastics.com/contact/>)